

# COMPANY PROFILE

## REMORA

Managing your milling projects since 1994



2023



# CONTENTS

- About Us
- Organization Chart
- Vision& Mission
- Our Services
- Collaborative Partner
- Past Projects
- Clients
- Achivements
- Contact

# 2

## ABOUT US

Remora - Morocco

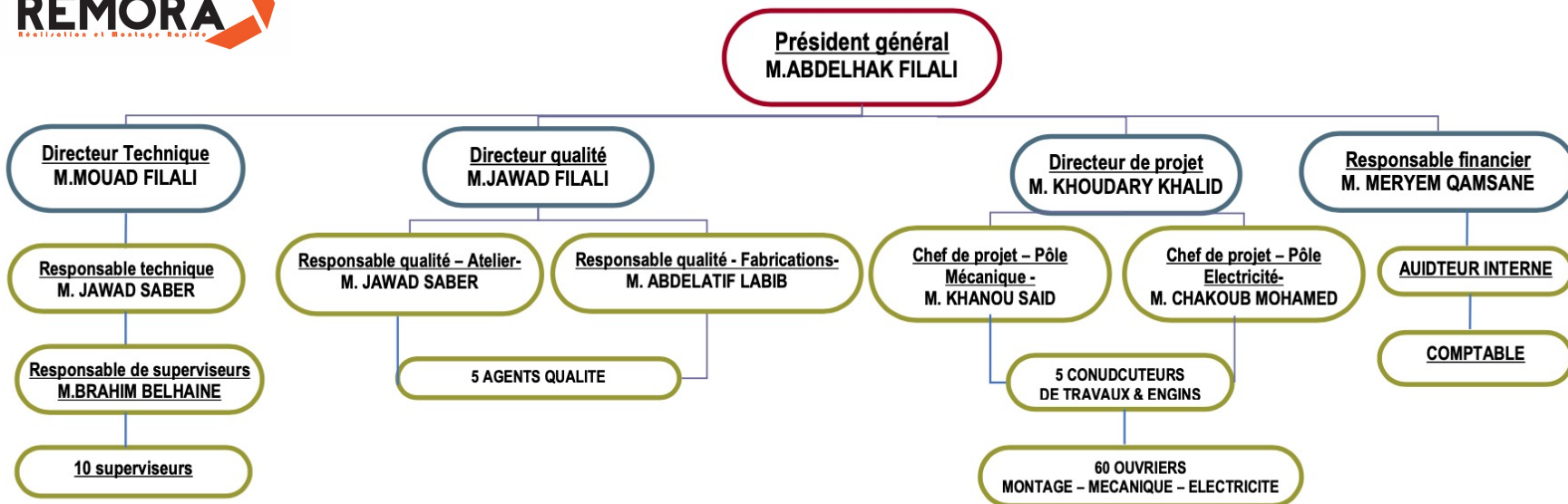


## ABOUT US

- REMORA was founded in 1994, by Mr Filali Abdelhak, the inheritor of a hundred years of experience of his family in the milling industry.
- REMORA rapidly won over importance and substantial recognition in the manufacture and assembly of agri-food production lines and Storage Silos in Morocco, a position at the head of the Moroccan market enabling it to widen and improve its activities by placing it henceforth at the helm of enterprises operating on the African Continent and Middle-East
- Its services include know-how in worksite management, client service skills and training of workers to efficiently manage planning of manufacture and assembly of milling production lines for flour, semolina, and livestock feed. ....
- REMORA has always specialized in the manufacture and assembly of all sorts of suction product handling parts and storage units, as well as metal structures.
- All the products have always been made by skilled and qualified operators at the Remora workshops in Casablanca, Morocco across the years and thanks to the experience and top skills making up a part of the strong points the company has to offer where Remora has won over the confidence of large sector manufacturers such as BÜHLER, SYMAGA ,STOLZ,SCE,FRAME henceforth completing projects in partnership with national and international entities.
- REMORA exports high quality Moroccan products and services everywhere in Africa.



# ORGANIZATION CHART





# MATERIAL AND HUMAN RESOURCES



A staff of  
**140 internal** skilled technicians



**3 tower cranes** with hoisting capacity of  
more than **3T**  
with jib



Crane boom



High performance engineering office  
(Autocad, Logitrace, Solidworks...)

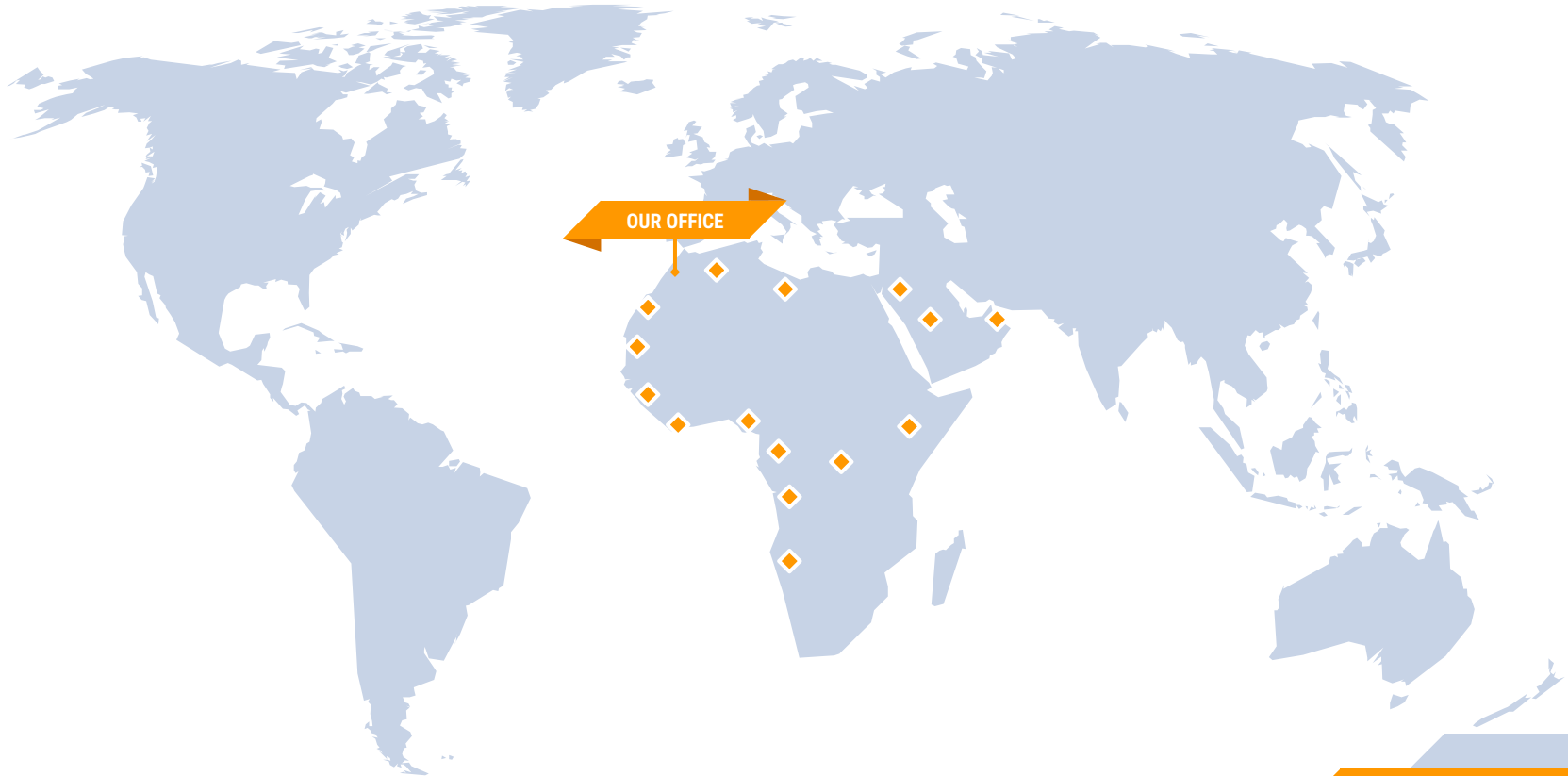


**3 Clark**  
five ton capacity devices **5T**



Electric winch **5T**

## NATIONAL AND INTERNATIONAL PRESENCE



# 3

## VISION & MISSION

Remora - Morocco





## VISION & MISSION

To consistently provide comprehensive package of manufacture and assembly Services & Solution.

To consistently be better, we strive :

- ☐ To exceed the expectation of our customers.
- ☐ To promote individual and team excellent of our employees.
- ☐ To create a positive different in Power Industry.
- ☐ To provide best proposal and solution to prolong operations of equipment.

### SYSTEMATIC – QUALITY – SERVICE

- |  |  |
|--|--|
| <input type="checkbox"/> International Quality & Standards | <input type="checkbox"/> Installation & Assembly |
| <input type="checkbox"/> Professional                      | <input type="checkbox"/> Maintenance             |
| <input type="checkbox"/> Experience                        | <input type="checkbox"/> Consulting & Support    |
| <input type="checkbox"/> System Design                     | <input type="checkbox"/> Reliability             |



## OUR SERVICES

### Realisation

Metal construction and suction work planned and monitored by an engineering firm

### Mechanical assembly

An ambitious team headed by a manager highly experienced in assembly work

### Electrical assembly

An ambitious team headed by a manager highly experienced in electrical work

### Silos Installation

Installation of different types of silos : Round and square with different capacities

### Building Installation

Installation of various head houses, milling towers, warehouses and flat storages

### Maintenance

Monitoring maintenance projects during and after the warranty period



## OUR METHODOLOGY AND PROCESS ARE SIMPLE

CONTEXT &  
LAUNCH

EVALUATION

EXECUTION

Delivery

**Context & launch** : Ensures project objectives and execution conditions, site stakes and involves key contacts

**Evaluation** : Review all worksites to establish status, priorities and schedules

**Execution** : Deployment of multidisciplinary teams to accomplish the various tasks set out in the schedule. Regular meetings with decision-makers to arbitrate and monitor compliance with expectations and achievements.

**Delivery** : Dedicated IO test team set up, production validated by the manufacturer (e.g. Bühler), workforce available after start-up for fault clearance work and warranty.



## How we organize our work

### REMORA TEAM



- Supervising the proper execution of assembly work
- Identification of pre-requisites required for costing and execution.
- Coordinates work with all on-site participants
- Takes charge of all assembly phases according to specifications (mechanical, electrical, hydrolic ....)
- Our Project Manager prepares and participates in weekly meetings, writes and shares notes on points raised and arbitrations.



### OUR CLIENT

- Identify a privileged contact (e.g. Project manager )
- Provides access to all documents and resources required for the smooth running of the project
- Validates achievements and progress reports
- Participate in weekly meetings
- Monitor the overall progress of all site participants

# 4

## OUR PARTNERS

Remora - Morocco



## COLLABORATIVE PARTNER

Milling processes, steel construction, silos and square silos



# 5

## CLIENTS

Remora - Morocco



## SOME OF OUR CLIENTS



مطاحن المغرب Moulin du Maghreb





# 6

## PAST PROJECTS

Remora - Morocco



## Project 2 x 600T/24H OCRIM



### SAWAMAE AL GHILAL

#### Localisation Project : Dammam KSA

**Context :** REMORA supports customer in increasing flour crushing capacity at Al Ghilal site

Dismantling of two 700T/24h capacity production units

Assembly of two production units, capacity 1,200T/24h

Electrical installation of two mills



#### **Mission description :**

- Dismantling and assembly of two flour production lines with a total capacity of 1200T/H
- Deployment of a multidisciplinary team of over 60 specialist technicians over a period of 6 months.
- REMORA deployed the necessary means to respect the fixed schedule for the realization of the Project.
- REMORA carried out commissioning and IO testing with Ocrim teams



## Project storage Barley and malt



### FANDY SOUSS

Localisation Project : AGADIR - MOROCCO

#### Context :

REMORA helped Fandy Souss build its first flour mill in southern Morocco

Assembly of 12 wheat storage cells 5,000T/cell

Assembly of a flour production line with a total capacity of 700T/24H

Manufacture of 20 finished product flour storage cells, capacity 80T/cell



#### Mission description :

- Remora accompanied fandy souss through all stages of setting up the flour mill.
- Remora manufactured all PF and bagging silos for the customer
- Deployment of a multidisciplinary team of over 40 specialist technicians over a 6-month period.
- Remora carried out commissioning and IO testing with Bühler teams



## Project flour mill 1.200T total



### **GRANDES MOEGENS ANGOLA** **Localisation Project : ANGOLA**

**Context :** REMOREA helped GMA build its first mill in Angola, at the port of Luanda.

Assembly of 12 wheat storage cells 5,000T/cell

Assembly of a flour production line with a total capacity of 2x600T/24H

Assembly of conveyor belts from ship unloader to receiving tower



#### **Mission description :**

- REMORA supported GMA in all stages of setting up the flour mill
- Deployment of a multidisciplinary team of over 60 specialist technicians over a 6-month period.
- REMORA carried out start-up and IO testing with Bühler teams



## Project storage Barley and malt



### **Soufflet Malt Ethiopia / Bühler Localisation Project : ETHIOPIA**

#### **Context :**

REMORA assisted Bühler in the construction of a storage project dedicated to the production of malt for the Soufflet malting plant in Addis Ababa.

Erection of 12 storage cells 50,000m<sup>3</sup>

Erection of 16 silos with a capacity of 27,000m<sup>3</sup>

Assembly of 15 shipping silos

Assembly of transport elements

#### **Mission description :**

- Remora accompanied Bühler through all stages of project set-up
- Remora supplied all the lifting equipment and tools required for assembly
- Deployment of a multidisciplinary team of over 50 specialist technicians over a 12-month period
- Remora carried out commissioning and IO testing with Bühler teams



## Project storage Barley and malt



**Mass Céréale**

**Localisation Project : SENEGAL**

### **Context :**

REMORA helped Mass Céréale build its first storage unit in Senegal

Installation of 16 wheat storage cells 5,000T/cell

Assembly of a flat storage warehouse

Installation of conveyor belts and chain conveyors

Installation of shipping silos



### **Mission description :**

- REMORA assembled all the silos supplied by CHIEF
- Deployment of a multidisciplinary team of over 25 specialist technicians over a 12-month period
- Electrical installation of the entire plant

7

## OUR ACHIEVEMENTS

Remora - Morocco







“ REMORA supports its customers in the realization of their projects with appropriate expertise in the field and quality to international standards with trained and professional human resources.





# THANKS!

Any questions?

+212661161713

+212661250781

<http://www.remora.ma/>